



**Waterstone View, Chapel Lane, Farnsfield,  
Newark, NG22 8JW**

**£595,000**

Immaculately presented Georgian period detached home dating circa 1840 situated in the conservation area this prime location offers an elevated position with views over the rear garden towards Farnsfield, across Main Street and the surrounding countryside. Offered with no upward chain and retaining all the charm and character of a property of this period, the spacious accommodation briefly comprises entrance hall, living room, sitting room, garden room, open plan kitchen/dining room, utility room, cloakroom/wc. First floor, three double bedrooms, the master bedroom has en-suite bathroom/wet room, dressing room and store, family bathroom. Outside, yorkstone flagstone parking to front aspect with two garages, one which has workshop space with doorway to the rear garden. Rear garden is totally enclosed and private with yorkstone flagstone patio, set in two parts with lawn garden having flower/shrub border, covered pergola walk way and further lawn area with fruit trees and bushes.





**SERVICES**

All mains services available. Gas central heating.

**EPC RATING – E.**

**COUNCIL TAX BAND – F.**

**LOCAL AUTHORITY** - Newark and Sherwood District Council.

**TENURE** - Freehold.

**VIEWINGS** - By prior appointment through Alasdair Morrison and Mundys.



Farnsfield Farnsfield village has a range of amenities including local Co-op store, doctors, Village Centre offering a range of social classes, eateries, public houses and hairdressers. Farnsfield also boasts a tennis club, cricket club, table-tennis club, bowls club, as well as numerous organisations. It also has playing fields, allotments, bridleways and footpaths that access the Southwell Trail and surrounding countryside. Close to the village is Hexgreave Hall and Business Park where there are offices, live/work homes and meeting facilities. Local primary school and Minster School catchment area.

Entrance Hall Multi paned glazed double doors lead to the entrance hall. Tiled floor. Doors off and wooden balustrade stairs rising to the first floor.



Living Room 6.71m x 5.84m (22'0" x 19'02") Oak flooring. Feature cast iron fireplace with tiled inset hearth and wooden surround. Two radiators and wall lights. Double glazed window to the front elevation and double glazed sash window and hardwood door to the rear.

Sitting Room 4.32m x 4.24m (14'02" x 13'11") Cornish slate floor. Radiator. Brick inset fireplace with log burner. Double glazed window to the side elevation.

Garden Room 3.20m x 2.77m (10'06" x 9'01") Cornish slate floor. Double glazed windows set upon a brick base. Leaded double glazed double doors to the rear garden.

Kitchen Diner 5.59m x 3.28m max (18'04" x 10'09" max) Handmade farmhouse style kitchen with granite work surface. Franke sink and grooved drainer to worktop. Bosch electric oven and De-dietrich combination oven with hob and extractor over. Integrated dishwasher and fridge. Wall lights. Double glazed window to the front elevation and double glazed sash window to the side elevation. Tiled floor.



Utility Room 1.83m x 1.78m (6'0" x 5'10") Glow worm central heating boiler. Plumbing and space for washing machine, tumble dryer and fridge/freezer space. Tiled floor.

Cloakroom 1.83m x 1.35m (6'0" x 4'05") Fitted with a low flush WC and pedestal wash hand basin. Splash back tiling to walls and tiled floor. Heated towel rail. Double glazed window to the front elevation.

First Floor Landing Loft access with loft ladder allowing access to the roof space with 2 Velux windows giving light to the two separate storage areas. Double glazed sash window to the rear elevation. Doors off.



Bedroom One 4.29m x 4.19m (14'01" x 13'09") Double glazed window to the front elevation and double glazed sash window to the rear elevations. Radiator.

En-Suite 3.94m max x 2.21m (12'11" max x 7'03") Double glazed windows to the front and side elevations. Fitted with a suite comprising tiled bath, open walk-in shower, bidet, contemporary vanity wash hand basin and low flush WC. Splash back tiling to walls, tiled floor. underfloor heating, Heated towel rail.



Walk-In Dressing Area 2.06m x 1.52m (6'09" x 5'0") Fixed desk/dressing table. Double glazed window to the rear elevation. Further store room off with shelves and hanging rails.

Bedroom Two 4.34 m x 4.27m (14'03" x 14'0") Feature cash iron fireplace with tiled hearth and brick mantle. Double glazed sash window to the rear elevation. Radiator.

Bedroom Three 4.27m x 3.20m (14'0" x 10'06") Double glazed window to the front elevation. Velux window to side elevation. Radiator.

Bathroom 3.00m x 2.18m (9'10" x 7'02") Handmade cupboards with granite tops fitted with a suite comprising panelled bath, low flush WC and vanity wash hand basin. Separate shower cubicle. Heated towel rail. Shelved double airing cupboard. Splash back tiling to walls and tiled floor. Extractor fan. Downlights inset to ceiling.

Outside To the front of the property a yorkstone flagstone driveway provides off road parking in front of the two garages. Garage has a Hormann electric roller door and vaulted ceiling offering storage space. Power and light supplied. Main garage has a Hormann electric roller door with window, workshop space and rear door. Power and light supplied.

The rear garden has two sections, one lawn area with flower and shrub borders and a yorkstone flagstone patio area with rear light. A covered pergola walkway with roses and creepers leads through to a brick built outhouse, timber shed and green house. There is a further lawned area, fruit bushes and mature apple trees.





**WEBSITE**

Our detailed website shows all our available properties and also gives extensive information on all aspects of moving home, local area information and helpful information for buyers and sellers. This can be found at [mun dys.net](http://mun dys.net)

**SELLING YOUR HOME – HOW TO GO ABOUT IT**

We are happy to offer FREE advice on all aspects of moving home, including a Valuation by one of our QUALIFIED/SPECIALIST VALUERS. Ring or call into one of our offices or visit our website for more details.

**REFERRAL FEE INFORMATION – WHO WE MAY REFER YOU TO**

Sills & Betteridge, Ringrose Law LLP, Burton and Co, Bridge McFarland, Dale & Co, Bird & Co and Gilson Gray who will be able to provide information to you on the Conveyancing services they can offer. Should you decide to use these Conveyancing Services then we will receive a referral fee of up to £150 per sale and £150 per purchase from them.

CWH, J Walter and Callum Lyman will be able to provide information and services they offer relating to Surveys. Should you decide to instruct then we will receive a referral fee of up to £125.

Coverings will be able to provide information and services they offer relating to removals. Should you decide to instruct then we will receive a referral fee of up to £125.

Mundys Financial Services who will be able to offer a range of financial service products. Should you decide to instruct Mundys Financial Services we will receive a commission from them of £250 and in addition, the individual member of staff who generated the lead will receive £50.

**BUYING YOUR HOME**

An Independent Survey gives peace of mind and could save you a great deal of money. For details, including RICS Home Buyer Reports, call 01522 556088 and ask for Steven Spivey MRICS.

**GETTING A MORTGAGE**

We would be happy to put you in touch with our Financial Adviser who can help you to work out the cost of financing your purchase.

**NOTE**

1. None of the services or equipment have been checked or tested.
2. All measurements are believed to be accurate but are given as a general guide and should be thoroughly checked.

**GENERAL**

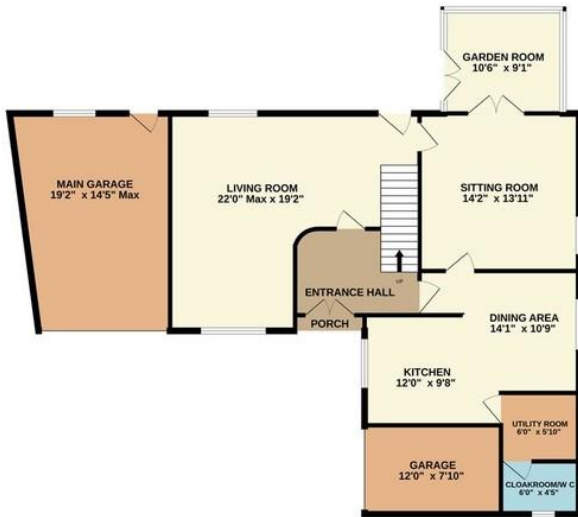
If you have any queries with regard to a purchase, please ask and we will be happy to assist. Mundys makes every effort to ensure these details are accurate, however they for themselves and the vendors (Lessors) for whom they act as Agents give notice that:

1. The details are a general outline for guidance only and do not constitute any part of an offer or contract. No person in the employment of Mundy has any authority to make or give representation or warranty whatever in relation to this property.
2. All descriptions, dimensions, references to condition and necessary permissions for use and occupation and other details should be verified by your self on inspection, your own advisor or conveyancer, particularly on items stated herein as not verified.

Regulated by RICS. Mundys is the trading name of Mundys Property Services LLP registered in England NO. OC353705. The Partners are not Partners for the purposes of the Partnership Act 1890. Registered Office 29 Silver Street, Lincoln, LN2 1AS.



GROUND FLOOR  
1337 sq.ft. approx.



1ST FLOOR  
936 sq.ft. approx.



TOTAL FLOOR AREA : 2273 sq.ft. approx.

Whilst every attempt has been made to ensure the accuracy of the floorplan contained here, measurements of doors, windows, rooms and any other items are approximate and no responsibility is taken for any error, omission or mis-statement. This plan is for illustrative purposes only and should be used as such by any prospective purchaser. The services, systems and appliances shown have not been tested and no guarantee as to their operability or efficiency can be given.  
Made with Metropix ©2023

26 Kirkgate  
Newark  
NG24 1AB  
newark@amorrison-mundys.net  
01636 700888

22 King Street  
Southwell  
NG25 0EN  
southwell@amorrison-mundys.net  
01636 813971

29 Silver Street  
Lincoln  
LN2 1AS  
info@mundys.net  
01522 510044

22 Queen Street  
Market Rasen  
LN8 3EH  
info@mundys.net  
01673 847487

Agents Note: Whilst every care has been taken to prepare these sales particulars, they are for guidance purposes only. All measurements are approximate and for general guidance purposes only and whilst every care has been taken to ensure their accuracy, they should not be relied upon and potential buyers are advised to recheck the measurements.